

# AXOVIA 220B RTS

ARM MOTORIZATION FOR SWINGING GATES



Integrated electronics



End-limits integrated within the arm

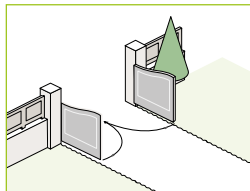


Up to 2 m  
200 kg per leaf

---

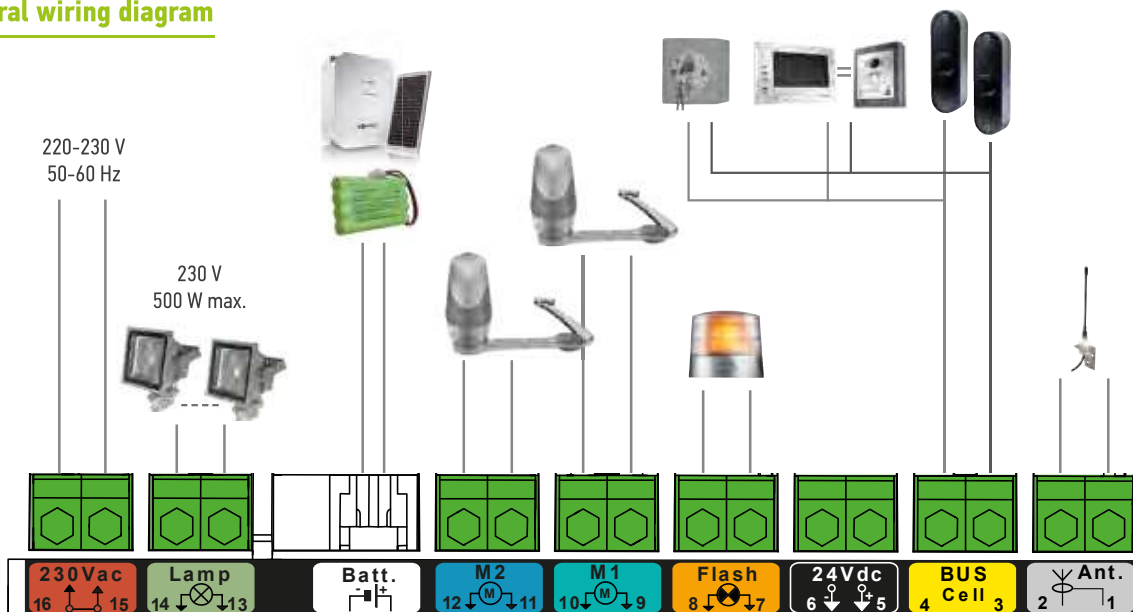
Individual housing  
Intensive use

## Application area



- Opening angle up to 120°
- Up to 2 m - 200 kg per leaf

## General wiring diagram



## 100% built-in motorization for easy start-up

- Get started in 2 minutes with the remote control only
- Integrated electronics to save time at installation
- End-limits integrated within the arm to avoid installing ground stoppers in opening
- Rapid, ergonomic setting of end-limits
- Meets standards after self-learning without any additional setting

### Fast and safe

- Fast opening: 90° in 10 seconds
- Self-blocking arm withstanding high winds and forcing
- Easy to unlock for manual operation
- A backup battery can be incorporated in the motor unit to cater for power cuts

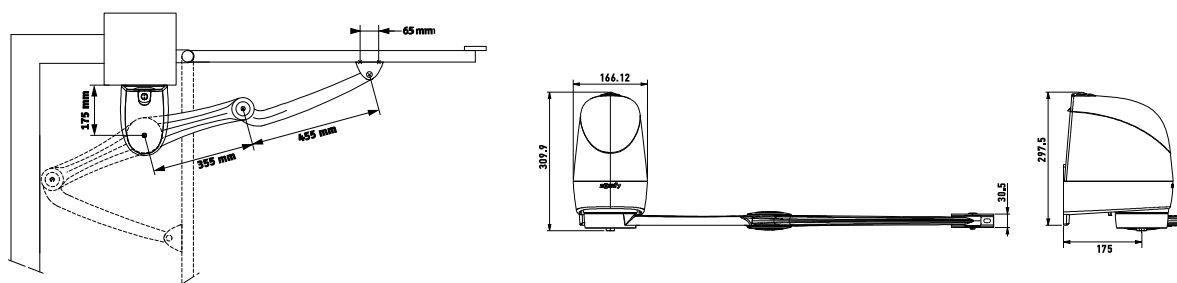
### Preserves the gate's condition

- Reproduces the natural opening movement without straining the gate
- Soft stop

### Convenient to use

- Automatic closing after time delay
- Pedestrian opening by wired or wireless control

## General overall size



## Technical characteristics

Mains power supply	220-230 Vac 50/60 Hz	Accessories power supply	24 Vdc / 1 A
Minimum room needed behind the leaf*	490 mm	Opening time to 90°	10 s
Maximum hinge pins offset**	250 mm	RTS radio frequency	433.42 MHz
Motor voltage	24 Vdc	Number of remote controls	32 channels maximum
Maximum power consumption	130 W	Index of protection	IP 44
Lighting output	Halogen lighting 500 W maximum	Operating temperature	-20°C to +60°C

\* see definition page 24 (swinging gate motor guide, diagram 1)

\*\* see definition page 24 (swinging gate motor guide, diagram 2)