



Smart Home and Video Doorphone Systems



- EFES Galaxy modular, antivandal, digital outdoor panel user's manual.
- EFES connection diagram in color and B/W systems with single and multiple distribution.
- EFES connection diagram in color and B/W systems with distribution box.
- EFES connection diagram for digital audio and video systems.
- Switch setting scheme

ATTENTION

Please do not lose this user's manual! Otherwise, in case you want to change your password, you cannot request another user's manual due to security measures. We charge service fees for password changes.



Smart Home and Video Doorphone Systems

Place a 75 Ohms resistor between Video(A) and Video(B) terminals (pink-grey) of last junction box, otherwise you may have blurred images and loss in colors.

3.4 DOOR ACCESS with USER PIN

In standby mode, press the **(#)** button. The LED screen will display “---F.No”. Enter the apt. number and press **(#)** again. If there was a PIN assigned to that apt. “----dP” will be displayed on screen. Enter the 4 digit individual PIN to open the door. If a PIN was not assigned to that apt. system will drop out of this menu.

3.5 USER SETTINGS MENU

In standby mode, press & hold **(1)**, **(2)**, or **(3)** until “----P” is displayed. Enter the 4 digit user PIN and press **(#)** to enter the user settings menu. “Func_” will be displayed on screen. Enter the number of the desired function and press **(#)** within 15 sec to enter the submenu.

#	Function
1	User PIN settings
2	Door access PIN settings
3	Apt PIN settings
4	Activate/Deactivate calls to apt.
5	Assigning user I-Button /Assigning user Key Fob
6	Deleting the Key Fobs assigned to an apt.

3.5.1 USER PIN SETTINGS

In user settings menu, press **(1)**. “----nP” will be displayed on screen. Enter the 4 digit new PIN. Press **(#)** to save, **(*)** to cancel. If cancelled reenter the new PIN and press **(#)** to save.

3.5.2 DOOR ACCESS PIN SETTINGS

In user settings menu, press **(2)**. “----nP” will be displayed on screen. Enter the 4 digit new PIN. Press **(#)** to save, **(*)** to cancel.

3.5.3 APARTMENT PIN SETTINGS

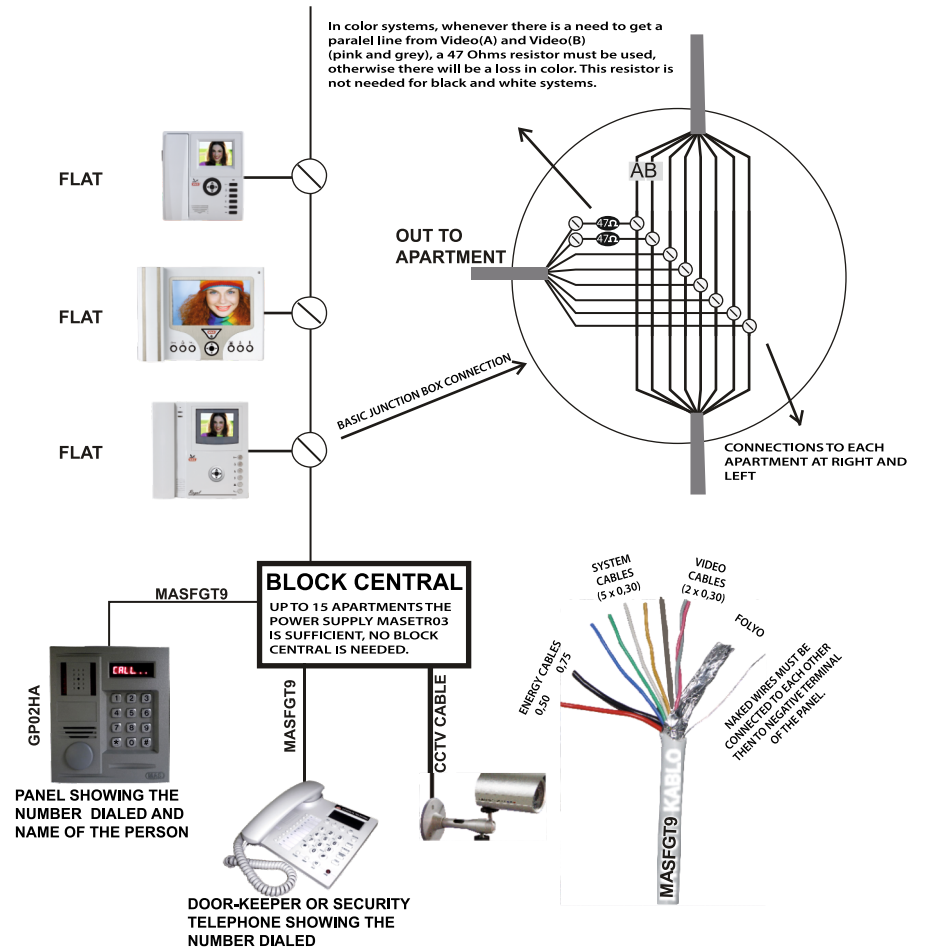
In user settings menu, press **(3)**. “---F.No” will be displayed on screen. Enter the apt number (1-255) and press **(#)**. “----nP” will be displayed on screen. Enter the 4 digit new PIN. Press **(#)** to save, **(*)** to cancel.

3.5.4 ACTIVATE/DEACTIVATE CALLS TO APT

In user settings menu, press **(4)**. “---F.No” will be displayed on screen. Enter the apt number (1-255) and press **(#)**. Either “Prot_1” or “Prot_0” will be displayed on screen, momentarily. These numbers indicate the call status. “1” indicates call status to the apt is active and “0” indicates call status to the apt is deactivated. Press **(1)** to activate and press **(0)** to deactivate. Press **(#)** to cancel without saving.

3.5.5 ASSIGNING USER I-BUTTON / KEY FOB

In user settings menu, press **(5)**. “---F.No” will be displayed on screen. Enter the apt number (1-255) and press **(#)**. “TOUCH” will be displayed on screen. Please touch & hold the desired I-button(or key fob closer) to the housing, until “FOUND” and “RECORD” is displayed on screen. If that specific I-button was already assigned in the system, “FOUND” and “ERROR” is displayed on screen.



In color video systems, dasy chan connections increase the performance of the system. Loss of color is avoided and installation is easier.

In MAS Intercom systems, an indoor unit which is defective or not hung off does not affect other apartments nor the system.

Systems having a junction box are always open to outer effects and this may lead the intercom system to go out of order.

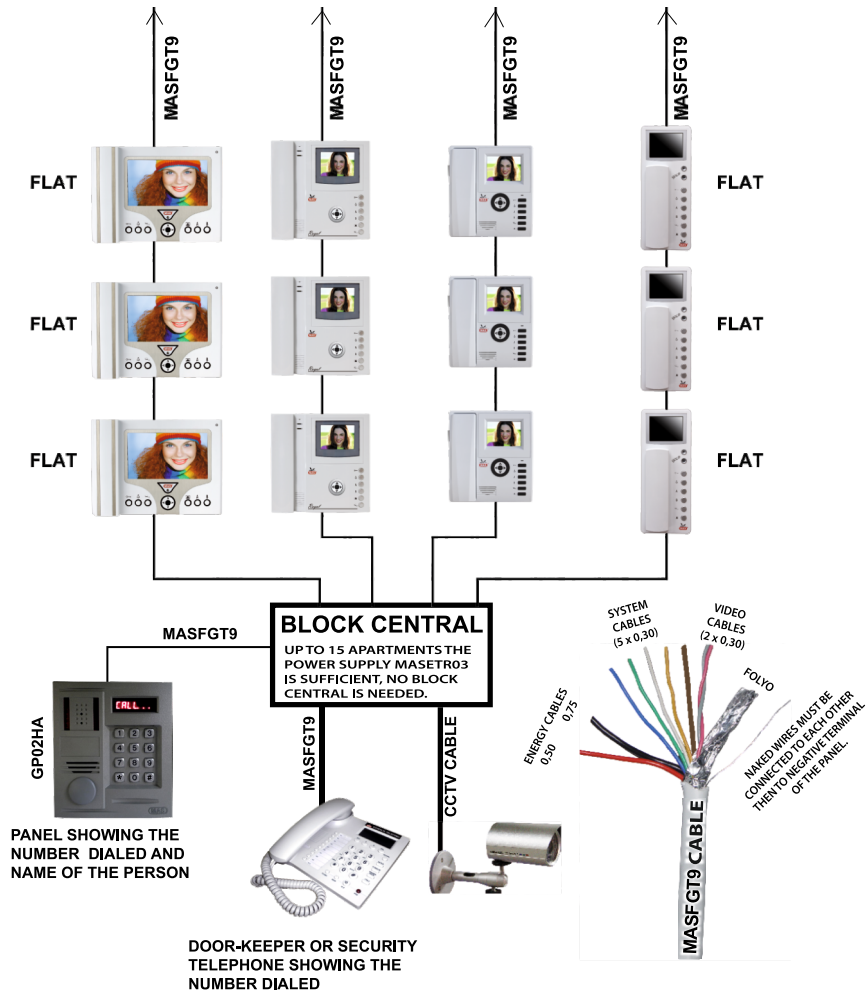


Smart Home and Video Doorphone Systems

EFES SYSTEMS

Ideal connection diagram in single and multiple distribution schemes.

Place a 75 Ohms resistor between Video(A) and Video(B) terminals (pink-grey) of last junction box, otherwise you may have blurred mages and loss in colors.



In color video systems, dasy chan connections increase the performance of the system. Loss of color is avoided and installation is easier.

In MAS Intercom systems, an indoor unit which is defective or not hung off does not affect other apartments nor the system.

Systems having a junction box are always open to outer effects and this may lead the intercom system to go out of order.

3.6 SYSTEM SETTINGS MENU

In standby mode, press & hold **(#)**. First "Syst" and then "----P" will be displayed on the screen. Enter the 4 digit system PIN and press **(#)** again to enter the system settings menu. "Func_" will be displayed on screen. Enter the number of the desired function and press **(#)** again within 15 sec. to enter the submenu.

#	Function
1	System PIN settings
2	Door access PIN functionality settings
3	EFES System settings update / upload to all indoor units
4	Assigning the block no
5	Deactivate I-button/or all key fobs assigned to all apts
6	Allowing door access with apt. PIN
7	Adjusting the duration of door lock open time
8	Resetting EEPROM memory to factory settings

3.6.1 SYSTEM PIN SETTINGS

In system settings menu, press **(1)**. "----nP" will be displayed on screen. Enter the 4 digit new PIN. Press **(#)** to save, **(*)** to cancel. If cancelled reenter the new PIN and press **(#)** to save.

3.6.2 DOOR ACCESS PIN FUNCTIONALITY SETTINGS

In system settings menu, press **(2)**. Either "Loc_1" or "Loc_0" will be displayed on screen, momentarily. These numbers indicate the door access PIN functionality status. "1" indicates that the PIN is active and "0" indicates that the PIN is deactivated and can't be used to open the door. Press **(1)** to activate and press **(0)** to deactivate. Press **(*)** to cancel without saving.

3.6.3 EFES SYSTEM SETTING UPDATE / UPLOAD

In system settings menu, press **(3)**. EFES system setting parameters and the corresponding values in memory will be displayed on screen, momentarily one after another. Each parameter will be displayed, followed by "-----". Please enter the new value or press **(*)** to move on to the next parameter without making any changes. If a new value was entered, press **(#)** to save. After 5 parameters were displayed, "SEND" and "PROGR.?" will be displayed on screen, asking whether these parameter values should be send to all the apt units! Press **(#)** to send, press **(*)** to cancel.

EFES apt unit's system setting parameters and values:

- **ABS1** : Antiblock time-1 (min 90sec - max 240sec) input: 9-24
- **ABS2** : Antiblock time-2 (min 180sec - max 240sec) input: 18-24
- **EAS1** : Screen Active time-1 (min 0sec - max 30sec) input: 0-3
- **EAS2** : Screen Active time-2 (min 20sec - max 30sec) input: 2-3
- **CH_** : Connection channel (CH 1 if byte 0x02, CH 1 if byte 0x00) input: 1-2

3.6.4 ASSIGNING THE BLOCK NO

In system settings menu, press **(4)**. "BL.No_" and actual block number will be displayed on screen for a while. After this number disappears, enter the desired block number (between 0 and 15) and update this time in memory by pressing **(#)**.

3.6.5 DEACTIVATE I-BUTTON ASSIGNED TO AN APT

In system settings menu, press **(5)**. "----F.No" will be displayed on screen. Enter the apt number (1-255) and press **(#)**. "DEL_?" will be displayed on screen. Please touch & hold the administrator I-button to the housing to deactivate the I-button assigned to that apt.

3.6.6 ALLOWING DOOR ACCESS WITH APT PIN

In system settings menu, press **(6)**. Either "dLoc_1" or "dLoc_0" will be displayed on screen, momentarily. These numbers indicate the door access with apt. PIN functionality status. "1" indicates that the PIN is active and "0" indicates that the PIN is deactivated and can't be used to open the door. Press **(1)** to activate and press **(0)** to deactivate. Press **(*)** to cancel without saving.

3.6.7 ADJUSTING THE DURATION OF DOOR LOCK OPEN TIME

In system settings menu, press **(7)**. "PERIOD" and "x_Sec" will be displayed on screen. "x" is an administrator/technician determined number between 1-8, designating the door lock open time in memory in seconds. After this number disappears, enter the desired digit (between 1 and 8) and update this time in memory.

3.6.8 RESETTING EEPROM MEMORY TO FACTORY SETTINGS

In system settings menu, service technician can press "8" to reset the EEPROM memory to factory settings. You can see the EEPROM memory factory values in Appendix-1.

4 FUTURE POTENTIAL PROPERTIES

- Determining the first apartment number between 2-255 (other than 1)
- Confirmation from the apt unit when saving/changing the apt. PIN for the first time.
- Quickly assigning the I-Buttons in an order of apt number.
- Audio warning signal at the apt unit when apt. PIN or I-Button is used to open the door. (incl. on/off option).
- Audio warning signal at the entry panel when an apt. is called (N/A in current EFES units)

5 TECHNICAL PROPERTIES

Power consumption: Standby mode	: 4W (18V-220mA)
Active mode	: 5W (18V-280mA)
Apartment capacity	: 255
Highest number assignable to an apt.	: 255
PIN digits	: 4
User PIN capacity	: 10000
I-Button capacity (Dallas-DS1990)	: 1220
Key fob capacity	: 9 pcs for each apt.
Apt. unit call time	: 20 sec.
Talk time limit (Antiblock)	: 90sec (max. 240sec)
Door lock open time	: 1-8 sec.



MASEFES DIGITAL - H DOORPHONE - VIDEO DOORPHONE CONNECTION SCHEME

