



## Hardware Quick Installation Guide Shielded Patch Panel

This document will guide you through the basic installation process for your new D-Link Shielded Patch Panel.



### Quick Installation Guide

# About This Guide

This guide contains step-by-step instructions for setting up your D-Link Shielded Patch Panel. Please note that the model you have purchased may appear slightly different from those shown in the illustrations.

## Product Overview

### Front Panel



Figure 1. Shielded Patch Panel Front

### Color Coding Information

T568A		T568B	
Pin 1	White/Green	Pin 1	White/Orange
Pin 2	Green	Pin 2	Orange
Pin 3	White/Orange	Pin 3	White/Green
Pin 4	Blue	Pin 4	Blue
Pin 5	White/Blue	Pin 5	White/Blue
Pin 6	Orange	Pin 6	Green
Pin 7	White/Brown	Pin 7	White/Brown
Pin 8	Brown	Pin 8	Brown

Table 1. Wire Color Code

### Installation



Figure 2.

A. First, carefully unscrew the screws and open up the Shielded Patch Panel's metal cover.

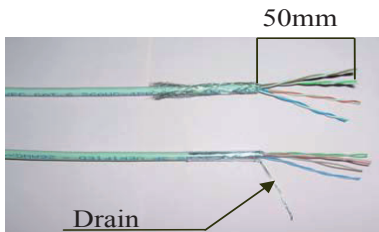


Figure 3.

- B. To connect cable to the Shielded Patch Panel, strip approximately 50 mm from the cable jacket, fold back the foil or braid shield around the wires, and separate the wires into 4 pairs, following the order in the color-coding table (Table 1) for T568A or T568B wiring. (Figure 3)
- C. Separate a little space in the appropriate positions inside the panel and insert each pair of wire into each slot.



Figure 4.

D. Press the cable foil or braid shield to ground it, and keep the cable straight. Punch the wires with a 110 or Krone impact tool and cut off the surplus wires. (Figure 4)

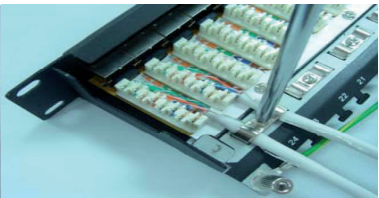


Figure 5.

E. Fasten the screw through the metal case in between each pair of cables in order to secure the pair tightly. (Figure 5)

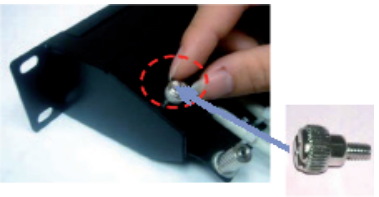
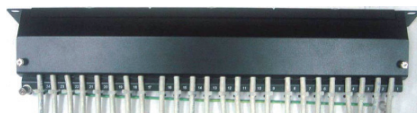


Figure 6.

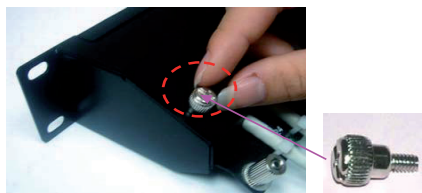
F. After all the cables have been installed into the panel, place the metal cover back onto the case and fasten the screws. (Figure 6)



**Figure 7.**

G. The installation is now complete.

## Notes



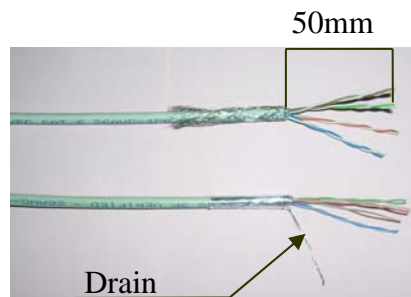
# Full shielded patch panel installation instruction

1



Load down the screws and opening the metal cover.

2



Strip approximately 50mm from the cable jacket, fold back the foil or braid shield, and separate the wire into 4 pair each.

3

	T568A		T568B
Pin 1	White/Green	Pin 1	White/Orange
Pin 2	Green	Pin 2	Orange
Pin 3	White/Orange	Pin 3	White/Green
Pin 4	Blue	Pin 4	Blue
Pin 5	White/Blue	Pin 5	White/Blue
Pin 6	Orange	Pin 6	Green
Pin 7	White/Brown	Pin 7	White/Brown
Pin 8	Brown	Pin 8	Brown

Follow the direction on the color-coding information to position T568A or T568B wiring, separate a little space on proper position and insert the wire pair by pair into each slot.

4



Press foil or braid shield to contact ground, and keep the cable straight; Push the wires with 110 or Krone impact tool and cut off the surplus wires.

5



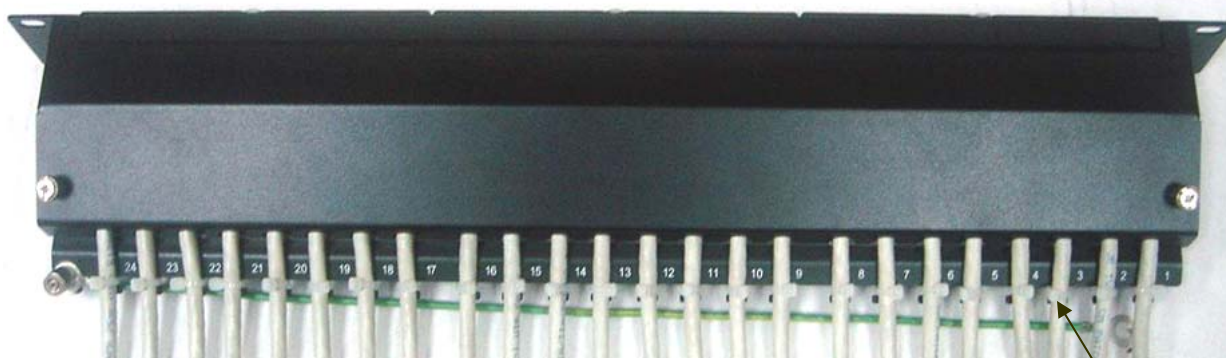
Fasten the screws through metal case to hold tightly down for two cable jackets in the same time.

6



Place the metal cover onto the bottom case and fasten screws.

7



Then complete the installation.

Cable tie