

Biometric Portfolio

Rapid. Smart. Convenient.

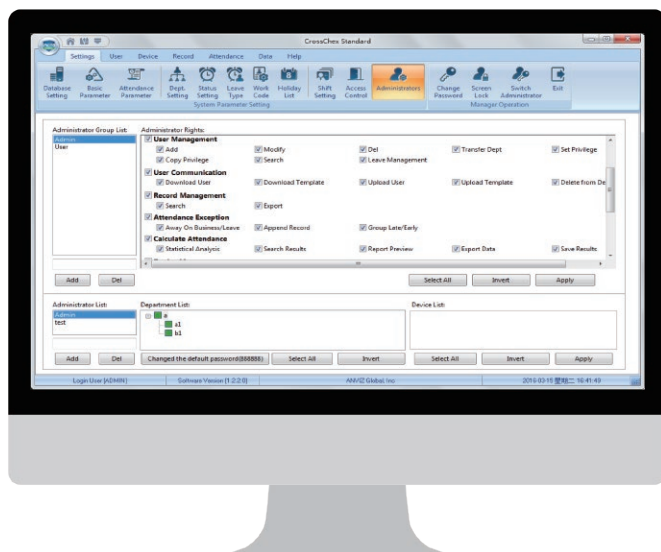




CrossChex

Desktop Based Time and Attendance and Access Control Management System

CrossChex is an intelligent management system of access control, time and attendance devices, which is applicable to all Anviz RFID and Biometric devices. The user-friendly and interactive design makes this system very easy to operate, the powerful function makes this system realize the management of department, staff, shift, payroll, access authority, and exports different time attendance and access control reports, satisfying different time attendance and access control requirements in different complicated environments.



Devices management



Admin management



User management



Access management



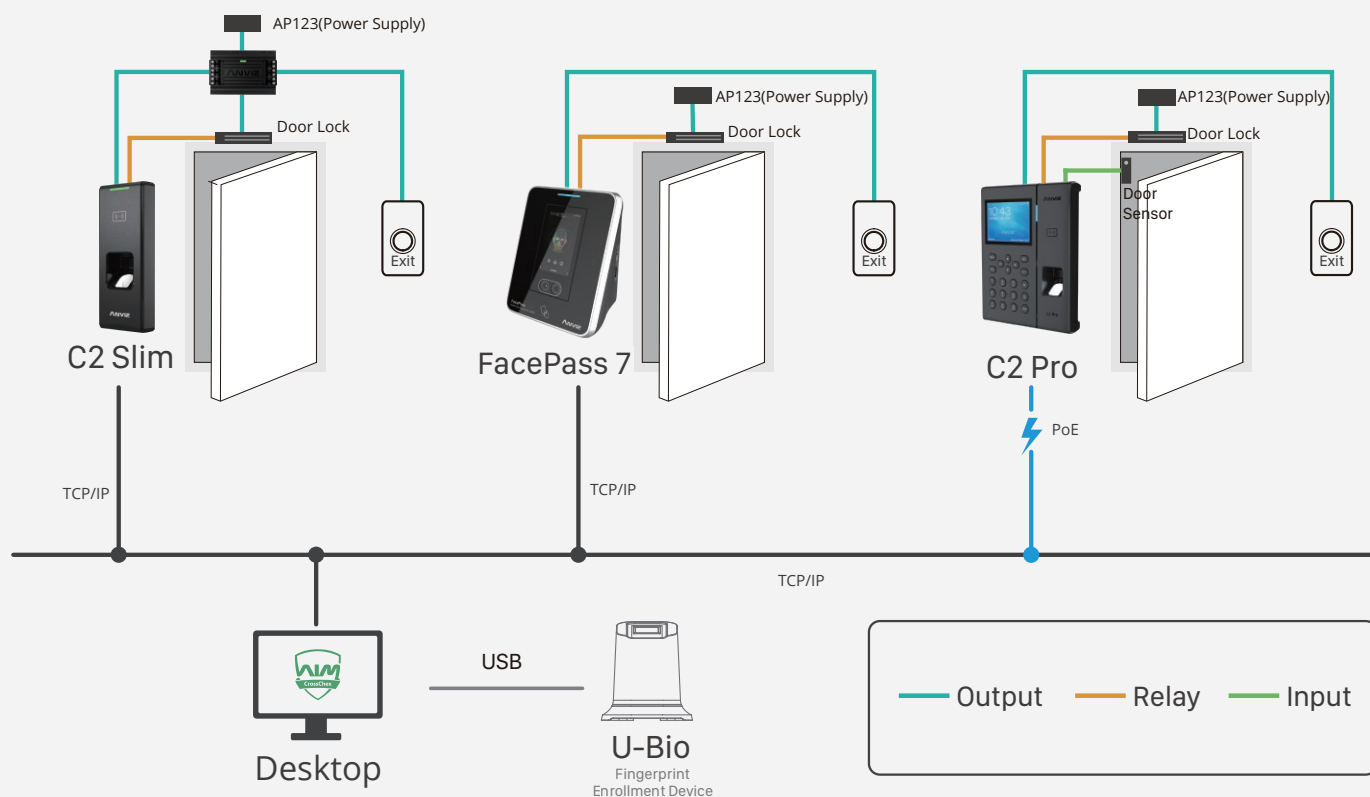
Report management



Shift & Holiday Management



Payroll SW Integration



Reader

T5 (Fingerprint and RFID Reader)



- 32-Bit High Speed CPU
- Max 5,000 Users, 5,000 Templates, 50,000 Records
- Touch On Active Fingerprint Sensor
- Standard EM Card, Optional Mifare Card
- Management Card Registration
- RS485, Mini USB, TCP/IP, Wiegand Out
- IP54
- Buzzer
- DC 12V

T5S (Slave Reader)



- 32-Bit High Speed CPU
- Touch On Active Fingerprint Sensor
- Optional EM Card/Mifare Card
- RS485
- IP54
- Buzzer
- DC 12V

C2SR (IP65 Reader)



- Wiegand 26/34
- Operating Frequency LF or HF
- Operating Temperature: -25°C-60°C
- Operating Humidity: 20%-80%
- IP65
- Buzzer
- DC 12V

Standalone Access Control

M3 Pro(Outdoor RFID Standalone Reader)



- 1Ghz Linux Based High Speed CPU
- Max 10,000 Users, 10,000 Cards, 100,000 Records
- LF/HF Dual Frequency RFID Card Reader
- Touch Activated Keypad
- Metal Case, Water & Dust Proof
- RS485, Mini USB, TCP/IP, Wiegand Out, Relay for Direct Lock control
- Tamper Alarm, Exit Button, Buzzer, Door Sensor
- IP65
- Optional WiFi & Bluetooth (With Mobile APP)
- Webserver
- DC 12V

M5 Pro (Outdoor FP&RFID Standalone Reader)



- 32-Bit High Speed CPU
- Max 5,000 Users, 5,000 Templates, 50,000 Records
- Touch On Active Fingerprint Sensor
- Standard EM Card, Optional Mifare card
- Metal Case, IP65, IK10
- RS485, Mini USB, TCP/IP, Wiegand Out, Relay for Direct Lock Control
- Group, Time Zone
- Tamper Alarm, Exit Button, Buzzer, Door Sensor
- DC 12V

M7 (Outdoor Standalone Access Control Reader)



- 32-Bit High Speed CPU, OLED
- Max 5,000 Users, 5,000 Templates, 50,000 Records
- Touch On Active Fingerprint Sensor
- LF/HF Dual Frequency RFID Card Reader
- RS485, Mini USB, TCP/IP, PoE (IEEE802.3af)
- Exit Button, Buzzer
- Group, Time Zone, Relay for Direct Lock Control, Scheduled Bell, Wiegand In/Out, Door Sensor
- Metal Case, IP65
- DC 12V

C2 Slim (IP65 Standalone Access Control Reader)



- 1Ghz Linux Based High Speed CPU
- Max 3,000 Users, 3,000 Templates, 100,000 Records
- Touch On Active Fingerprint Sensor
- Identification time less than 0.5 Second
- Standard EM Card, Optional Mifare Card/HID iClass
- RS485, TCP/IP, PoE (IEEE802.3af, Optional WiFi & Bluetooth (With Mobile APP))
- Group, Time Zone, Relay for Direct Lock Control, Wiegand In and Out, Door Sensor, Exit Button
- IP65
- Speaker
- Webserver
- DC 12V

W2 Pro (Standalone Access Control Reader)



- 1Ghz Linux Based High Speed CPU
- Max 3,000 Users, 3,000 Template, 100,000 Records
- Touch on Active Fingerprint Sensor and Keypad
- Identification time less than 0.5 Second
- 2.8" TFT LCD screen
- Standard EM Card, Optional Mifare Card
- TCP/IP, Mini USB, USB Host, RS485, Optional WiFi,
- Relay for Direct Lock Control Wiegand output, Exit Button, Door Sensor, Tamper Alarm
- Time Group, Self-Service Record Inquiry
- Speaker
- Webserver
- DC 12V/Optional Battery

P7 (PoE Standalone Access Control Reader)



- 32-Bit High Speed CPU, OLED Screen
- Max 5,000 Users, 5,000 Templates, 50,000 Records
- Touch On Active Fingerprint Sensor and Keypad
- Standard EM Card, Optional Mifare Card
- RS485, Mini USB, TCP/IP, PoE (IEEE802.3af),
- Self-Service Record Inquiry, Buzzer
- Group, Time Zone, Relay for Direct Lock Control, Scheduled Bell, Wiegand In/Out, Door Sensor
- Optional Outdoor Waterproof Cover
- Tamper Alarm
- DC 12V

TC580 (4G Standalone Access Control Reader)



- Dual Core Linux Based 1GHz CPU
- Max 10,000 Users, 10,000 Templates, 100,000 Records
- Touch On Active Fingerprint Sensor
- Identification time less than 0.3 Second
- 3.2 TFT LCD, 480*480 High Resolution
- Supports EM Card, Optional Mifare Card
- Self-Service Record Inquiry
- RS485, USB Host, TCP / IP, POE(IEEE802.3af)
- Optional WiFi/4G
- Wiegand In and Out
- Webserver, Self-Service Record Inquiry, Speaker
- Groups, Time Zones, Customized Messages,
- Exit Button, Door Sensor, Relay for Direct Lock Control
- DC 12V

C5 (Standalone Access Control Reader)



- Industrial Linux Based High Speed CPU
- Max 3,000 Users, 3,000 Cards, 100,000 Records
- Touch On Active Fingerprint Sensor
- 3.0" TFT LCD
- Standard EM Card, Optional Mifare Card
- TCP/IP, USB Host, RS485, Relay for Direct Lock Control, Optional WiFi
- Wiegand output, Exit Button, Door Sensor,
- Doorbell
- Self-Service Record Inquiry,
- Speaker
- Webserver
- DC 12V

■ Standalone Access Control

T5 Pro (Fingerprint & RFID Standalone Reader)



- 32-Bit High Speed CPU
- Max 5,000 Users, 5,000 Templates, 50,000 Records
- Touch On Active Fingerprint Sensor
- Standard EM Card, Optional Mifare Card
- Management Card Registration
- RS485, Mini USB, TCP/IP
- Relay for Direct Lock Control, Wiegand Out, Door Sensor, Exit Button, Buzzer
- DC 12V

T50K (Fingerprint&RFID Standalone Reader)



- 32-Bit High Speed CPU
- Max 5,000 Users, 5,000 Template, 50,000 Records
- Touch On Active Fingerprint Sensor
- Standard EM Card, Optional Mifare Card
- Management Card Registration
- RS485, Mini USB, Optional TCP/IP
- Relay for Direct Lock Control, Wiegand Out, Door Sensor
- Physical Button, Exit Button, Buzzer
- DC 12V

VF30 Pro (Colorful Fingerprint&RFID Standalone Reader)



- 1Ghz Linux Based High Speed CPU
- Max 3,000 Users, 3,000 Templates, 100,000 Records
- Touch On Active Fingerprint Sensor
- Identification time less than 0.5 Second
- 2.4" TFT LCD
- Standard EM Card, Optional Mifare Card
- RS485, Mini USB, PoE (IEEE802.3af), TCP/IP, Optional WiFi
- Group, Time Zone, Direct Lock Control, Scheduled Bell, Message, Relay for Direct Lock Control, Wiegand In/Out, Doorbell, Door Sensor, Exit Button
- Tamper Alarm, Speaker
- Optional Outdoor Waterproof Cover
- Webserver
- DC 12V

T60 Pro (Colorful Fingerprint&RFID Standalone Reader)



- 1Ghz Linux Based High Speed CPU
- Max 3,000 Users, 3,000 Templates, 100,000 Records
- Touch On Active Fingerprint Sensor
- Identification time less than 0.5 Second
- 2.8" TFT LCD
- Standard EM Card, Optional Mifare Card
- RS485, Mini USB, PoE (IEEE802.3af), USB Host, Optional WiFi/4G
- Group, Time Zone, Direct Lock Control, Scheduled Bell, Message Function, Dual Relays, Speaker
- Wiegand In/Out, Doorbell, Door Sensor
- Self-Service Record Inquiry, Speaker
- Optional Outdoor Waterproof Cover
- Webserver
- DC 12V

OA1000 Pro (Professional Standalone Access Control Reader)



AFOS

Waterproof
Dust proof
Scratchproof

- Dual Core Linux Based 1Ghz CPU
- Max 10,000 Users, 10,000 Templates, 100,000 Records
- Touch On Active Fingerprint Sensor
- Identification time less than 0.3 Second
- 3.5" TFT LCD, 1.3MP camera Display Fingerprint & User Picture, Snapshot
- Standard EM Card, Optional HID iClass / Mifare Card
- Self-Service Record Inquiry, Speaker
- RS232, RS485, USB Host, TCP/IP, WiFi, Optional 4G
- Dual Relays, Wiegand In & Out, 16 Groups, 32 Time Zones
- Webserver
- DC 12V

OA1000 Mercury Pro (Live Detection Access Control Reader)



Lumidigm®
Wet Fingerprint
Dirty Fingerprint
Oil Fingerprint

- Dual Core Linux Based 1Ghz CPU
- 1,000 Users (Lumidigm Algorithm)
- 10,000 Users (Optional Anviz BioNANO Algorithm)
- 200,000 Logs
- Lumidigm Mercury Live Scan Fingerprint Module
- 3.5" TFT LCD, 1.3MP camera Display Fingerprint & User Picture, Snapshot
- Standard EM Card, Optional Mifare Card
- Self-Service Record Inquiry, Speaker
- RS232, RS485, USB Host, TCP/IP, WiFi, Optional 4G
- Dual Relays, Wiegand In & Out, 16 Groups, 32 Time Zones
- Webserver
- DC 12V

■ Iris Recognition System

UltraMatch S2000



- Dual Core Linux Based 1Ghz CPU
- Max 2,000 Users, 100,000 Records
- Standard EM CARD
- OLED Screen
- TCP/IP, RS485, WiFi AP Mode
- Wiegand Out, Speaker
- Webserver, Online Registration
- DC 12V

■ Face Recognition System

FacePass 7



- Dual Core Linux Based 1Ghz CPU, Dual IR Camera
- 3,000 Users, 100,000 Records
- Standard EM card, Optional Mifare Card
- Three Identification Mode Face, Card, ID+PW
- Energy Saving Auto Wake/Sleep
- Voice and LED Prompt
- 3.2" HD TFT Touch Screen
- USB host, Tamper Alarm, Wiegand in and out, Door Sensor, Exit Button, Relay for Direct Lock Control
- TCP/IP, WiFi, Optional 4G
- Webserver,
- DC 12V / Optional Battery

Time Attendance

C2 Pro (Professional Fingerprint & RFID Device)



- Dual Core Linux Based 1Ghz CPU
- Max 10,000 Users, 10,000 Templates, 100,000 Records
- Touch On Active Fingerprint Sensor
- Identification time less than 0.3 Second
- EM Card, Optional Mifare Card/HID Iclass
- 3.5" TFT LCD
- PoE-TCP/IP, WiFi, RS485, USB Host
- 1 Relay, Wiegand Out
- Speaker
- WebServer
- DC 12V

A380 (Colorful Fingerprint&RFID Device)



- Dual Core Linux Based 1Ghz CPU
- Max 10,000 Users, 10,000 Templates, 100,000 Records
- Touch On Active Fingerprint Sensor and Keypad
- Identification time less than 0.3 Second
- Standard EM Card, Optional Mifare Card/HID Iclass
- 3.2" TFT LCD
- TCP / IP, RS485, USB Host, Relay out, Optional WiFi/4G
- 1 Relay, Exit Button
- Speaker
- WebServer
- DC 12V/Optional Battery

A380C (Colorful RFID Device)



- Dual Core Linux Based 1Ghz CPU
- Max 10,000 Users, 10,000 cards, 100,000 Records
- Standard EM Card, Optional MIFARE
- 3.2" TFT LCD
- TCP / IP, RS485, USB Host, Optional WiFi/4G
- 1 Relay, Exit Button
- Speaker
- WebServer
- DC 12V/Optional Battery

W1 Pro (Colorful Fingerprint&RFID Device)



- 1Ghz Linux Based High Speed CPU
- Max 3,000 Users, 3,000 Templates, 100,000 Records
- Touch On Active Fingerprint Sensor and Keypad
- Identification time less than 0.5 Second
- 2.8" TFT LCD
- Standard EM card, Optional Mifare Card
- 8 Customizable T&A States, 6-digit Work Code
- TCP/IP, Mini USB & USB Host, Optional WiFi
- Daylight Saving, Work Code, Short Message, Self-Service Record Inquiry
- Speaker
- Webserver
- DC 12V/Optional Battery

W1C Pro (Colorful RFID Device)



- 1Ghz Linux Based High Speed CPU
- Max 10,000 Users, 100,000 Records
- 2.8" TFT LCD
- Standard EM card, Optional Mifare Card
- 8 Customizable T&A States, 6-digit Work Code
- TCP/IP, Mini USB & USB Host, Optional WiFi
- Daylight Saving, Work Code, Short Message, Self-Service Record Inquiry
- Speaker
- Webserver
- DC 12V/Optional Battery

EP300 Pro (Colorful Fingerprint&RFID Device)



- 1Ghz Linux Based High Speed CPU
- Max 3,000 Users, 100,000 Records
- Touch On Active Fingerprint Sensor
- Identification time less than 0.5 Second
- 3.5" TFT LCD
- Optional EM Card, Mifare Card
- Mini USB & USB Host, TCP/IP Optional WiFi/Bluetooth
- 8 Customizable T&A States, 6-digit Work Code
- Daylight Saving, Work Code, Short Message, Self-Service Record Inquiry
- Webserver, Speaker
- DC 5V/Optional Battery

A350 (Colorful 4G Fingerprint&RFID device)



- 1Ghz Linux Based High Speed CPU
- Max 3,000 Users, 3,000 Templates, 100,000 Records
- Touch On Active Fingerprint Sensor and Keypad
- Identification time less than 0.5 Second
- Standard EM Card, Optional Mifare Card
- 3.5" TFT LCD
- RS232, Mini USB & USB Host, TCP/IP, Optional WiFi/Bluetooth/4G
- 8 Customizable T&A States, 6-digit Work Code
- Relay Out (For Scheduled Bell)
- Daylight Saving, Work Code, Short Message, Self-Service Record Inquiry
- Speaker
- Webserver
- DC 5V/Optional Battery

A350C (4G RFID T&A Terminal)



- 1Ghz Linux Based High Speed CPU
- Max 10,000 Users, 100,000 Records
- Standard EM Card, Optional Mifare Card
- 3.5" TFT LCD
- RS232, Mini USB & USB Host, TCP/IP, Optional WiFi/Bluetooth/4G
- 8 Customizable T&A States, 6-digit Work Code
- Relay Out (For Scheduled Bell)
- Daylight Saving, Work Code, Short Message, Self-Service Record Inquiry
- Speaker
- Webserver
- DC 5V/Optional Battery

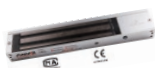
C2 (Colorful Fingerprint&RFID T&A Terminal)



- Industrial Linux Based High Speed CPU
- Max 3,000 Users, 3,000 Templates, 100,000 Records
- Touch On Active Fingerprint Sensor and Keypad
- Identification time less than 0.5 Second
- Standard EM Card, Optional Mifare Card
- 3.0" TFT LCD
- RS232, Mini USB & USB Host, TCP/IP, Optional WiFi/Bluetooth/4G
- 8 Customizable T&A States, 6-digit Work Code
- Relay Out (For Scheduled Bell)
- Daylight Saving, Work Code, Short Message, Self-Service Record Inquiry
- Speaker
- Webserver
- DC 5V/Over USB

Accessories

AML270



- Working Current: 500/250mA
- Holding Force: 250KGS
- Weight: 1.8KGS
- Size: 253*25*48mm
- Voltage: 12/24V DC

AEL200



- Working Current: 350mA
- Standby Current: 250mA
- Holding Force: 1000KGS
- Weight: 1.05KGS
- Size: 200*35*38mm
- Voltage: 12V DC

AEL201



- Working Current: 650mA
- Standby Current: 250mA
- Holding Force: 1000KGS
- Weight: 1.05KGS
- Size: 200*35*38mm
- Door States Signal Output(DSM)

PoE Splitter



- IEEE 802.3af Standard, Input DC 36V-57V (10/100M RJ45 Port)
- AUTO Negotiation/AUTO MDI/MDIX
- Circuit Isolation Protection
- Delivers Power Up to 100 Meters
- Dimensions: 102*45*27mm (L*W*H)
- Output DC 5V (USB), DC 12V (2 Pin terminal block), MAX 13W

U Bio(USB Optical Fingerprint Reader)



- Anviz Optical Fingerprint Sensor
- Accurate Image Capture and Good in Anti-interference, Fingerprint Image of No-distortion, Latent Fingerprint Removal
- USB Connection, SDK Available for Software Development

Core Technology

BioNANO® v11

Core Algorithm

Fingerprint - Facial - Iris

BioNANO Core Algorithm

Anviz biometric technologies are widely used in our fingerprint identification, face recognition and iris identification products. As one of our key technological achievements, the biometric identification algorithm BioNANO, was developed in house by our engineers and is now the algorithm used in all Anviz biometric products.



Fingerprint

- Suitable for both wet and dry fingers
 - Automatically heals the broken lines in fingerprint images
 - Extraction of features in worn fingerprints
 - Fingerprints template auto update
-
- Anviz Hermetic AFOS Fingerprint Sensor
Waterproof, dust proof and scratchproof IP65 fingerprint sensor
-
- Fingerprint Template Auto Update
Auto update means the previous lower quality fingerprint template will be automatically replaced by the new higher quality one during fingerprint verification
-
- High Speed Matching
Incredibly fast matching algorithm will complete a 1:1 match less than 0.5 sec and 1:3000 users less than 1 sec.
-
- Living Recognition
Living recognition can get fingerprint data from beneath surface of the skin so that dryness or even damaged or worn fingers create no problems for reliable reads.
-
- SDK
Anviz Software Development Kits (SDKs) offer a device communication, template extraction, access control setting and more. They support multiple platforms and language interfaces. Complete with APIs, Anviz SDKs are fully documented and come with sample applications for as-is or modified use.
-
- EVK
Anviz provide Evaluation Kit (EVK) for OEM Modules. The EVK offers Mini USB, RS485, RS232, Wiegand, Relay output and support Standalone and USB connection work mode.



Facial

- Non-contact
- Fast speed and easy to use
- Suitable for different lux application



Iris

- No way to fake, highest security
 - Most accurate, convenient, and reliable
 - Touchless verification, most sanitary
-
- Multi-communication Mode
TCP/IP, Mini USB, RS485, Wiegand, 4G, WiFi and so on.
-
- Webserver
Visit the device directly via the network. Setup and search the record from the device.
-
- Wide Temperature Circuit Design
Wide temperature circuit will ensure the device is suitable for different complex environment.
-
- Dual Storage
Dual storage ensures the data is more secure.
-
- BioNANO SDK
BioNano SDKs offer a full spectrum of capabilities, including image capture, template extraction, template matching, identification and more. BioNano SDK support multiple platforms and language interfaces.
-
- BioNANO EDK
Make the Anviz products with greater potential application, Anviz provide the Embedded development kits (EDKs). The Developers extend application base on Anviz product directly. The EDKs support Anviz Linux and WinCE terminal.



CloudClocking

Cloud Web Based Time and Attendance Management System

CloudClocking is an intelligent management solution for time & attendance by providing a real-time, direct data transfer from your biometric time & attendance device to your cloud platform. A user-friendly and interactive online platform provides a clear, easy to operate time & attendance solution accessible from any web-enabled device. Powerful functions enable efficient management of departments, staff scheduling, payroll and access authority, covering different company requirements across a variety of environments and multiple locations. Cloudclocking supports Anviz Linux based time and attendance devices.



Manage all of your company departments and employees



Imports/exports data in various file formats, such as CSV, XLS/XLSX, etc



Manage all of your company devices



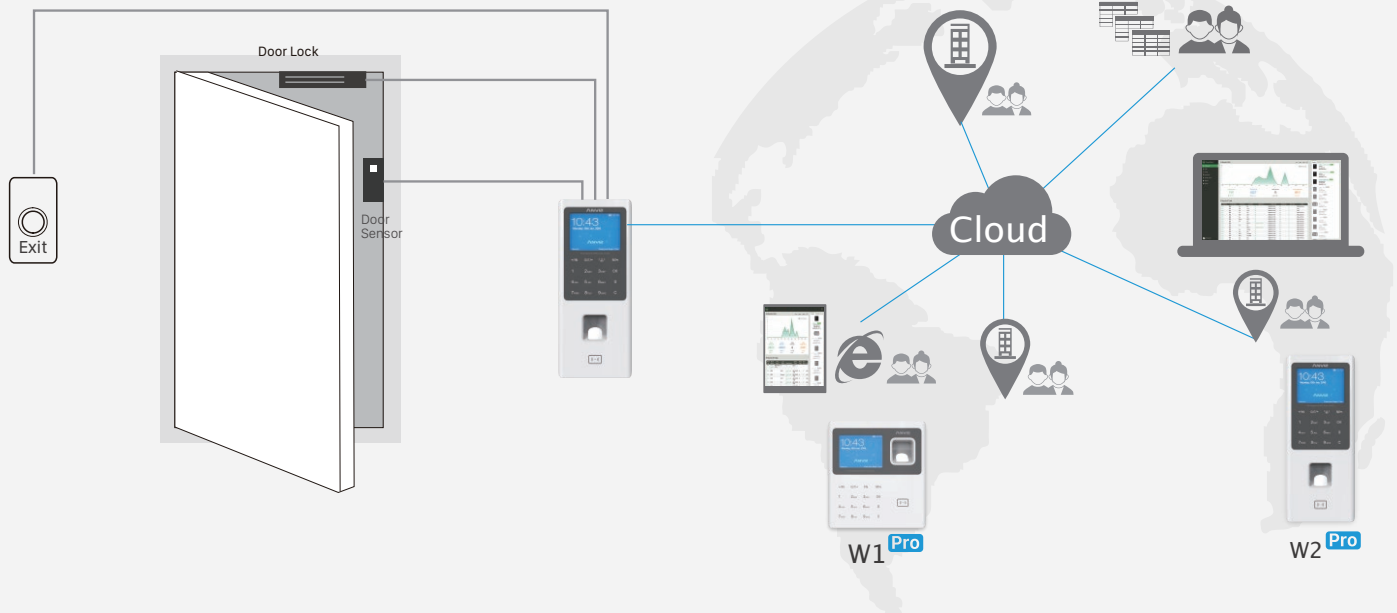
Exports attendance reports to 3rd party software



Manage all of schedules, shifts and reports



Browser - based operation, support Mac Win Linux



About Anviz

Founded in 2001, Anviz is a global leader in the field of intelligent security including Biometrics, CCTV and RFID Devices. Cutting edge technologies, sophisticated QA system (ISO certified) and worry-free services & support provide our partners with the key of business success.

Anviz dedicates to offer professional and comprehensive security solutions. With the continuously growing demand of public and private security, Anviz announced the surveillance product line which was created based on the innovations of our optical and digital image processing technology.

Combining the high-quality products and cost-effective security solutions, Anviz serves various clients from government, law, retail, industrial, commercial, financial, medical, education, etc.

AGPP Anviz Global Partner Program

AGPP is Anviz Global Partner Program. It is designed for industry-leading distributors, resellers, software developers and system integrators highly qualified in providing intelligent security solutions of Biometric, RFID and Surveillance in targeted vertical markets. The program helps partners build a sustainable business model in a fast-changing environment, where customers require value-added services, focused technical expertise and high levels of satisfaction.



Aggressive
Industry-leading Margins

Priority
Partner Technical Support

Online
Ordering and Private Partner Portal

Partner
Training Provided

Assisted
Marketing Campaign Programs

Preferred
Professional Services

Earned
MDF CO-OP Funds

Customer
Referral and Lead Generation Programs



Anviz Global Inc.

41656 Christy Street Fremont , Fremont, CA,94538

Tel: 408-2637700 | Toll-free:1-855-268-4948 | Inquiry: sales@anviz.com | www.anviz.com

©2019 Anviz Gloabl Inc. Anviz and identifying product names and numbers herein are registered trademarks of Anviz Global Inc. All non-Anviz brands and product names are trademarks or registered trademarks of their respective companies. Product appearance, build status and/or specifications are subject to change without notice.

Due to the consistent improvement of the product, this specification and appearance are subject to change without notice.